

Acknowledgements

We would like to thank our research participants who gave us their time and bravely shared their stories. We would also like to thank the Canadian Institutes of Health Research (CIHR) and the UBC Research-Based Theatre Cluster for generously supporting our work.

Thank you to everyone who has been part of the project during its journey: UBC-OSOT Staff, Alfiya Battalova, Amir Michalovich, Arel Jarus-Hakak, Hila Graf, Katrina Wilhelm, Amelia Copland, Shirley Chi, and Tetsuro Shigematsu.

Join us in diversifying health and human services at Inclusive Campus:

<https://inclusive-campus.osot.ubc.ca/>



THE UNIVERSITY OF BRITISH COLUMBIA

Research-Based Theatre Collaborative
Research Excellence Cluster

International Collaboration for
Inclusive Campus
Diversifying health and human service professions



Canadian Institutes
of Health Research

Instituts de recherche
en santé du Canada

Alone in the Ring

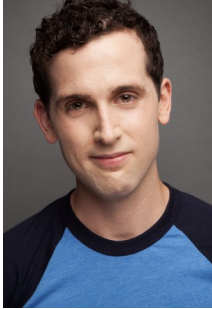
A research-based theatre production about inclusive workplaces for healthcare students and professionals



Cast and Crew



Michael Lee (Co-Investigator) is a Senior Instructor at UBC's Occupational Science and Occupational Therapy (MBA, PCOT). His research investigates student wellbeing, campus mental health, and teaching practices in higher education.



Scott Button (Lead Playwright) is an award-winning writer and actor who works in theatre, film & television. (www.scottbutton.ca). He is a member of the Emerging Playwrights' Unit (Arts Club Theatre) .



Dr. Tal Jarus (Principal Investigator/ Actor) is a Professor at UBC's Occupational Science and Occupational Therapy. Her primary area of research works to diversify health and human service professions.



Dr. Yael Mayer (Co-Investigator/Actor) is a postdoctoral research fellow at UBC's Occupational Science and Occupational Therapy department. She is a researcher, a therapist and a social entrepreneur.



Yuval Jarus (Music) is a singer and dancer who has trained in Vancouver and New York. Yuval has always loved music and its dialogue with movement, voice, and images.



Chris Cook (Director) is a therapist (MA) and theatre artist, and he is passionate about using theatre as a therapeutic, learning, and research tool. He runs a private practice in Vancouver.



Dr. George Belliveau (UBC Interdisciplinary Research-Based Theatre Collaborate Cluster Lead) is Professor of theatre education at UBC. His research focuses on research-based theatre and theatre education.



Jennica Nichols (Evaluator) is an inspiring implementation scientist and PhD candidate. Her research interests include measurement, arts-based research, knowledge translation, patient engagement, and reciprocal research.



Laen Hershler (Actor) is a performing artist, facilitator of creative processes, and UBC instructor. His research looks at using research-based theatre to facilitate dialogue around difficult topics and issues.



Laura Yvonne Bulk (Researcher/Actor) is a learner, woman, teacher, disabled person, artist, occupational therapist, Christian, scholar, advocate, and activist (@LYBOT). She researches belonging and disability.

About the Project

People with disabilities are significantly less likely to enter health and human service professions (e.g. nursing, social work, occupational therapy, medicine and physical therapy). Stigma and inaccessibility are two major reasons for this. Our work seeks to identify and address these barriers in university and healthcare settings. When we diversify health and human services, everyone benefits.

Over three years, we held 150 interviews with 80 students and clinicians who self-identify as living with a disability. We also met with people who oversee operations at universities and in healthcare: administrators, faculty, and employers. Our goal was to understand the successes and challenges to inclusive workplaces for students and clinicians in health and human services. The research was funded by the Canadian Institutes of Health Research (CIHR) (federal government).

You are about to witness the stories we heard from our participants on stage. We hope it helps you see new perspectives and reflect on your own experiences. How inclusive is your workplace? How could you make it more accessible?



About the Project

People with disabilities are significantly less likely to enter health and human service professions (e.g. nursing, social work, occupational therapy, medicine and physical therapy). Stigma and inaccessibility are two major reasons for this. Our work seeks to identify and address these barriers in university and healthcare settings. When we diversify health and human services, everyone benefits.

Over three years, we held 150 interviews with 80 students and clinicians who self-identify as living with a disability. We also met with people who oversee operations at universities and in healthcare: administrators, faculty, and employers. Our goal was to understand the successes and challenges to inclusive workplaces for students and clinicians in health and human services. The research was funded by the Canadian Institutes of Health Research (CIHR) (federal government).

You are about to witness the stories we heard from our participants on stage. We hope it helps you see new perspectives and reflect on your own experiences. How inclusive is your workplace? How could you make it more accessible?

Join us in the fight for inclusion.

